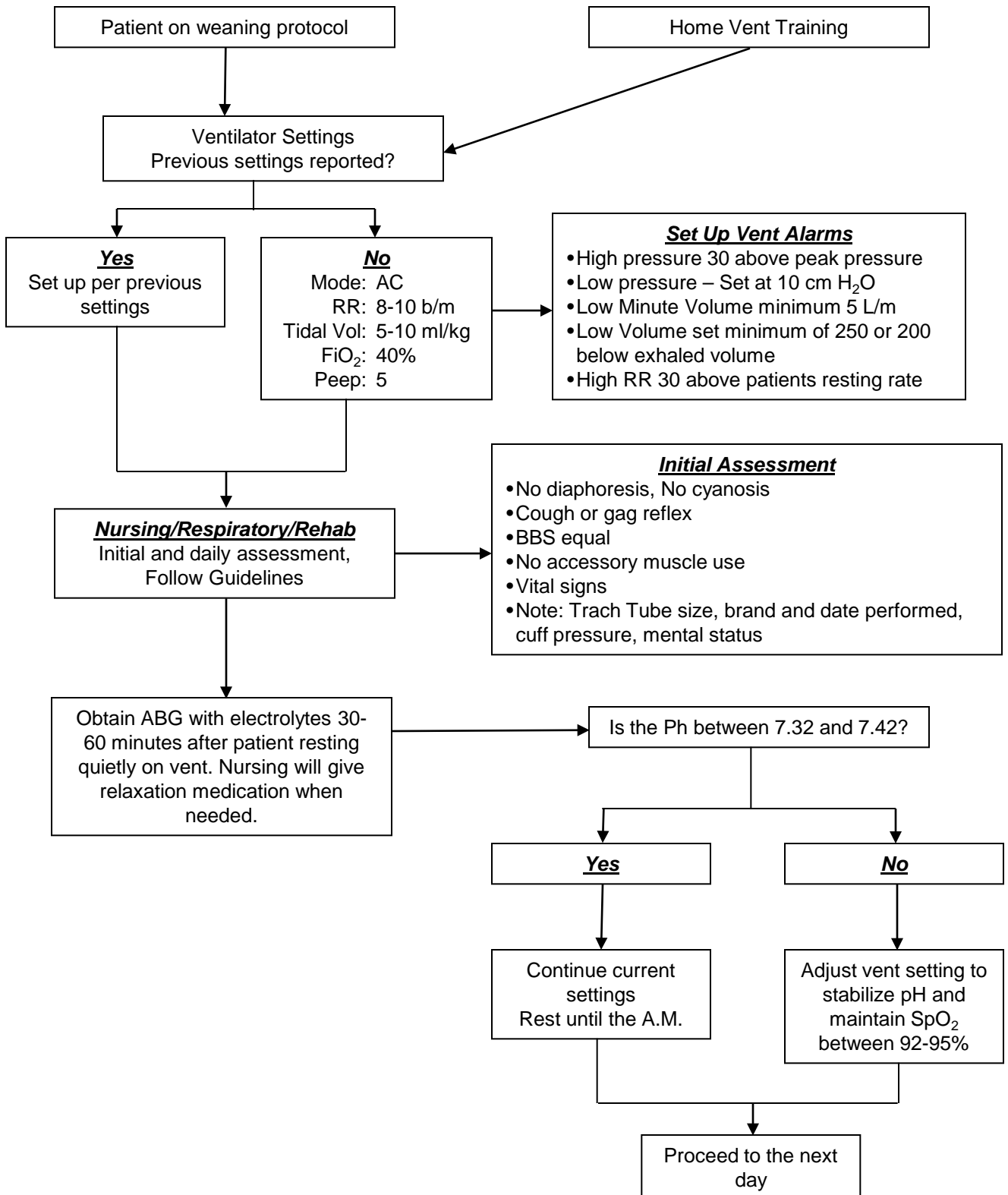


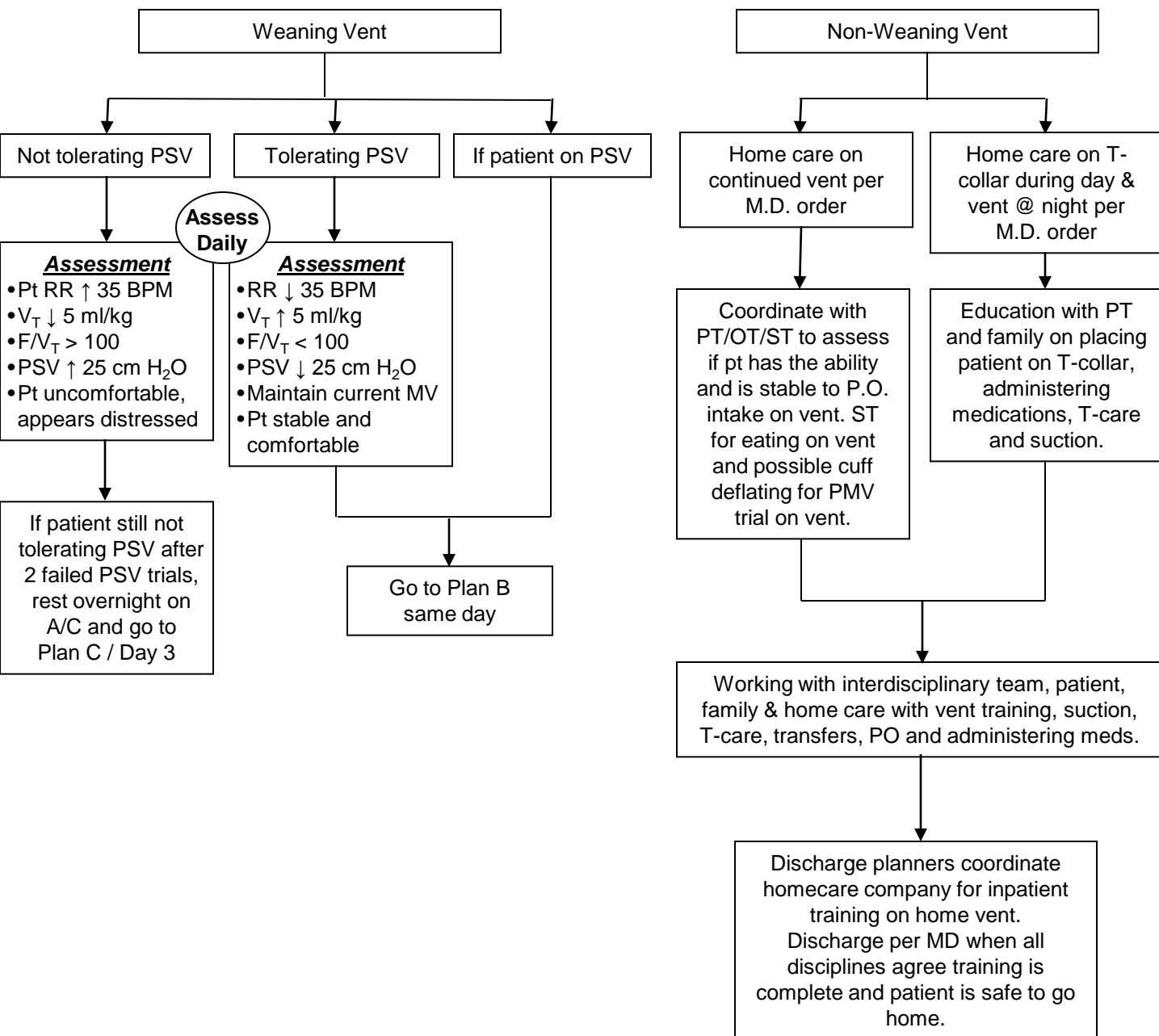
Decatur LTAC Ventilator Weaning Algorithm Care Plan

Admission Day 1



Ventilator Weaning Algorithm Care Plan

Plan A / Day 2



Ventilator Weaning Algorithm Care Plan

Plan B / Same Day or Day 3

Slow Wean / Plan D
4-7 days

Fast Wean
2-3 days

1. Assess daily for weaning, if stable start slow wean
2. Rotate PSV and AC. 2 -4° on AC and 2°-4° on PSV as tolerated from 08:00-20:00
3. Maintain $F/V_T < 100$
4. Look for weaning intolerance
 - Rapid/shallow breathing index ($F/V_T \geq .1$)
 - HR that does not \uparrow 20 above baseline
 - BP \uparrow or \downarrow by 20 cmHg systolic & 10 diastolic
 - RR > 35
 - $V_T < 5$ ml/kg of IBW
 - $SpO_2 < 92\%$ on $FiO_2 > 50$
5. If Pt appears fatigued on PSV:
 - Return to AC for 30 min then back to PSV
 - 2nd fatigue, return to AC for 30 min, back to PSV and \uparrow by 2 cm H₂O.
 - 3rd fatigue, repeat previous step
 - 4th fatigue, obtain ABG and return to AC for 8 cm until next A.M.
6. Assess for anxiety/discuss with MD for weaning medication/Nurse and RT coordinate medication

Phase I

1. Reduce PSV level by 2-4 cmH₂O as tolerated
2. Maintain desired Vt
3. Maintain $F/V_T < 100$
4. Ability to get out of bed
5. Assess for PO and cuff deflation/PMV trials
6. Family conference offered

1. Patient reach PSV 10 cm H₂O
2. Has adequate spontaneous Respiratory pattern
3. Obtain ABG with lytes after 4 on PSV 10

1. Daily weaning assessments
2. Maintain PSV level $F/V_T < 100$
3. T-collar trials as tolerated. \uparrow time off vent daily
4. If Pt appears fatigued on T-collar trials:
 - Return to PSV for 30 min then back to T-collar
 - 2nd fatigue, return to PSV for 4 hrs, back to T-collar.
 - 3rd fatigue, return to PSV until next A.M.
5. If febrile – Do not stop weaning w/ a temp alone. Assess all weaning criteria
6. Unable to maintain adequate ventilation after maximal PSV \uparrow .
 - Change to AC
 - Reason for failed weaning must be documented.
7. Placed on vent for short period due to fluid overload. Wean rapidly once condition reversed.
8. High anxiety preventing weaning – notify MD levels of symptoms & obtain orders for anxiety.
9. Refer to anxiety protocol.
10. Return to plan B when 4 hr trial is successful.

Plan B, Phase II – Fast Wean to T-Collar

1. Start T/C trials. 4 hr on 4 hr off during day. Rest on PSV 10 at night. (PT/OT/ST will work with pt. on the 4 hr rest.) Can \uparrow FiO_2 to keep Sat 92-95%
2. Next day \uparrow T/C trial to 12 hrs. Rest at night PSV 10.

Plan B, Phase III

3. Third day, \uparrow T/C trial to 24 hours
4. Obtain Q4 exhaled volumes & ABG after the 24 hrs

Is ABG acceptable?

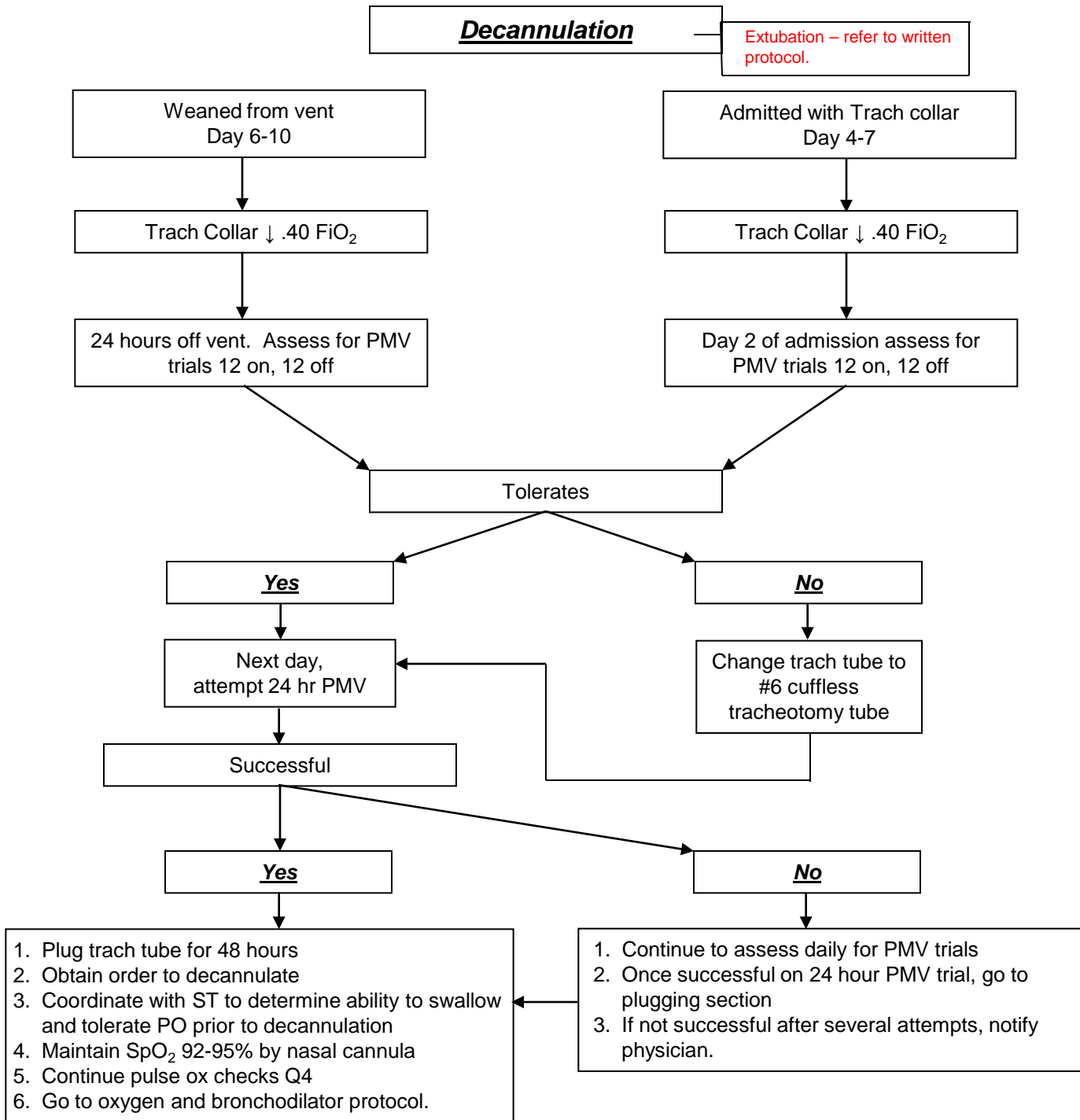
Yes

No

Discontinue ventilation and go to decannulation section

Assess for cause. Return to Phase I on Plan B.

Ventilator Weaning Algorithm Care Plan



Approved _____

Chief of Staff

Date: _____